

This corrosion mapping solution is perfect for large surfaces. The WheelProbe 2 features a captive array in an adaptive rubber wheel. Once filled with water, it becomes a portable immersive system that also significantly improves the accuracy of the overall inspection data. Moreover, because the encoder is fixed directly onto the WheelProbe 2, it cannot slip on the surface inspection as the wheel moves forward. This system, combined with the recording capabilities of the Veo3, accelerates inspection productivity. Results can then be reviewed with the powerful UTstudio+ or with UTmap for more advanced automatic defect detection.

Fig. 1: WheelProbe 2 adapts to all shapes

Fig. 2: WheelProbe 2 is suitable for any type of corroded parts

Industries & Markets

- Nuclear
- Oil & Gas
- Pipeline integrity service

Typical Inspection Applications

- Heat exchanger
- Pressure vessels
- Flare stacks

Features & Benefits

- Fastest recording capabilities
- High resolution
- CSV export
- Best SNR and near resolutions
- Stitching capabilities
- Quick and easy probe adjustments to match curved surfaces

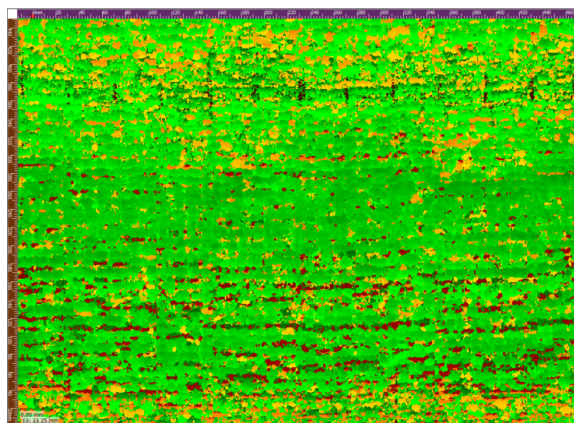


Fig. 3: Corrosion mapping data obtained with the WheelProbe 2

Recommended Package

Category	Part Number	Description
Product	Veo3 16:64PR BNC or Veo3 16:64PR LEMO	Veo3 16:64 PR / 2UT:PR BNC or Lemo
Product option	SW-Veo3 CSV	Export data to CSV file
Probe	WP2-5MHZ-64	<ul style="list-style-type: none"> • Frequency: 5 MHz • Elements: 64
Probe option #1	WP2-PACK1	<ul style="list-style-type: none"> • Horizontal handle • Back profiled roller • Filling equipment • Maintenance tools and manual • Rugged transportation case
Probe option #2	WP2-ADV-KIT2	<ul style="list-style-type: none"> • 2 x Flat front roller • Remote control • Front roller assembly • Laser guidance kit • Phone display kit
Software	UTMAP	Software suitable for C-Scan analyses

For further information, please contact the Sonatest Sales Team: sales@sonatest.com

Get in touch with your local Sonatest expert, available in more than 50 countries over 5 continents!



Sonatest (Head Office)
Dickens Road, Old Wolverton
Milton Keynes, MK12 5QQ
t: +44 (0)1908 316345
e: sales@sonatest.com

Sonatest (North America)
12775 Cogburn, San Antonio
Texas, 78249
t: +1 (210) 697-0335
e: sales@sonatestinc.com